



**LINDER**  
IMMOBILIEN

ATTIC MAISONETTE APARTMENT

**MOHRHALDENSTRASSE 166**



# CONTENTS

Macrolocation	3
Situation	4
Information about Riehen	5
Impressions	6
Pictures	7
Microlocation	8
Floor Plans Semibasement / Upper Floor	9
Floor Plan Attic	10
Legal Notice	11



## MACROLOCATION

The attic maisonette apartment at Mohrhaldenstrasse 166A in Riehen is situated in a very quiet location. The beautiful and sweeping Wenkenpark (1) is right outside the front door.

The bus stops of the bus lines 32 and 42, with which the children can reach the elementary school in Bettingen in 3 minutes, are about 500 meters away from the apartment (2). A three minute drive in the opposite direction, brings you to the Riehen village center, where various shopping facilities, a pharmacy, a post office, several bank branches, cafes and restaurants are located. Here you will also find stops for the S6 in the direction of the SBB train station, bus line 34 and tram line 6 in the direction of the city center.



About 900 meters from the apartment, there is also a small Mirgros Partner store, where the most important groceries can be purchased 365 days a year. Secondary school as well as high school can be attended in the Bäumlihof school building on the border between Riehen and Basel.



## SITUATION





## INFORMATION ABOUT RIEHEN

Riehen calls itself a „big, green village“ and rightly so. The many parks, large and small, as well as the extensive forest areas in the Lange Erlen and on the St. Chrischona offer a variety of beautiful local recreation areas. Riehen makes great efforts to preserve these and is therefore committed to a sustainable environmental and energy policy. Riehen has the largest geothermal plant in Switzerland and was awarded the „European Energy Award in Gold“ in 2004.

Over 100 clubs, from the Taekwondo School to the Whisky Circle Rieche, offer a wide range of leisure activities for children and adults, while the Fondation Beyeler and six other galleries, the Kunstraum Riehen and the Toy Museum also provide valuable cultural offerings. A music school for the musically talented is also available in Riehen.



Entrance Wenkenpark



Wenkenpark

Riehen has six daycare centers and 20 daycare families that look after infants of two months and older. Four elementary schools take care of the education of school-age children, while the grammar school and secondary school are located at Bäumlihof, which lies on the border between Basel and Riehen. Due to its family and youth policy, Riehen has also been the proud bearer of the Unicef label „Child Friendly Community“ since 2011.

Despite the rural character of the village, extended shopping is easily available in nearby Basel, which can be reached by public transport in 15 minutes. Riehen also has a well-developed public transport network and after 7 pm the Ruftaxi will take you from the Habermatten or from the Riehen Dorf tram stop directly to your front door upon presentation of a valid BVB ticket. Due to the proximity to the German border, a number of inexpensive shopping facilities and restaurants are available as well.



# IMPRESSIONS



Fondation Beyeler



Fondation Beyeler Park



Riehen Village Center



Spring in Riehen



## PICTURES





## MICROLOCATION



The spacious apartment at Mohrhaldenstrasse 166A is located in an very quiet location. The property has a private driveway where the double garages of the development are located. Because of this there is hardly any traffic here and so the sweeping yard and access road can be used by the children for playing, cycling and inline skating.



A path leads directly from the driveway to the Wenkenpark, one of the most beautiful recreational areas in Basel-Stadt.

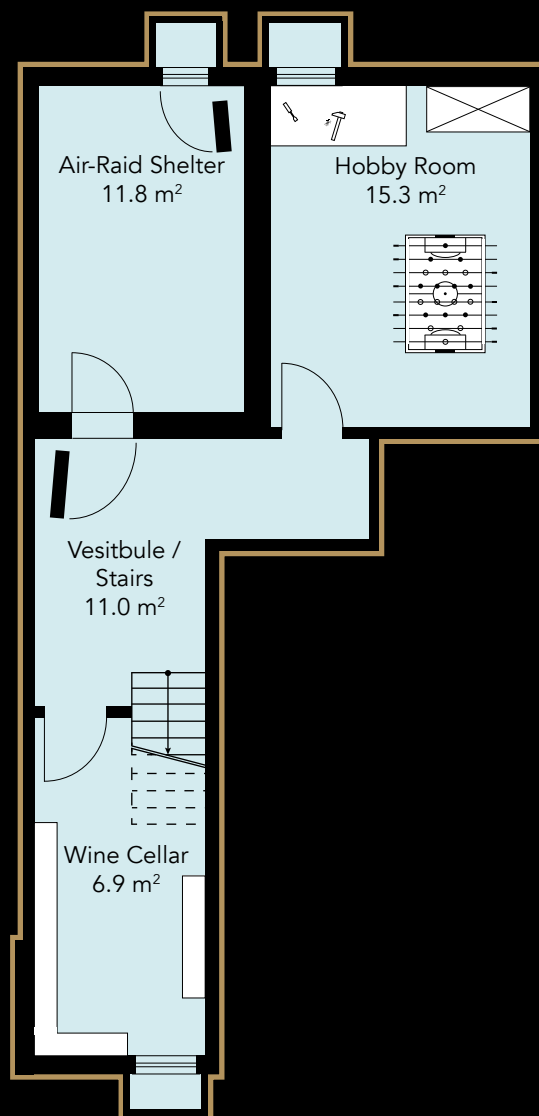


Extensive meadows, shady trees, a bistro, barbecue areas and a large playground invite you to linger.

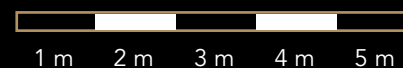
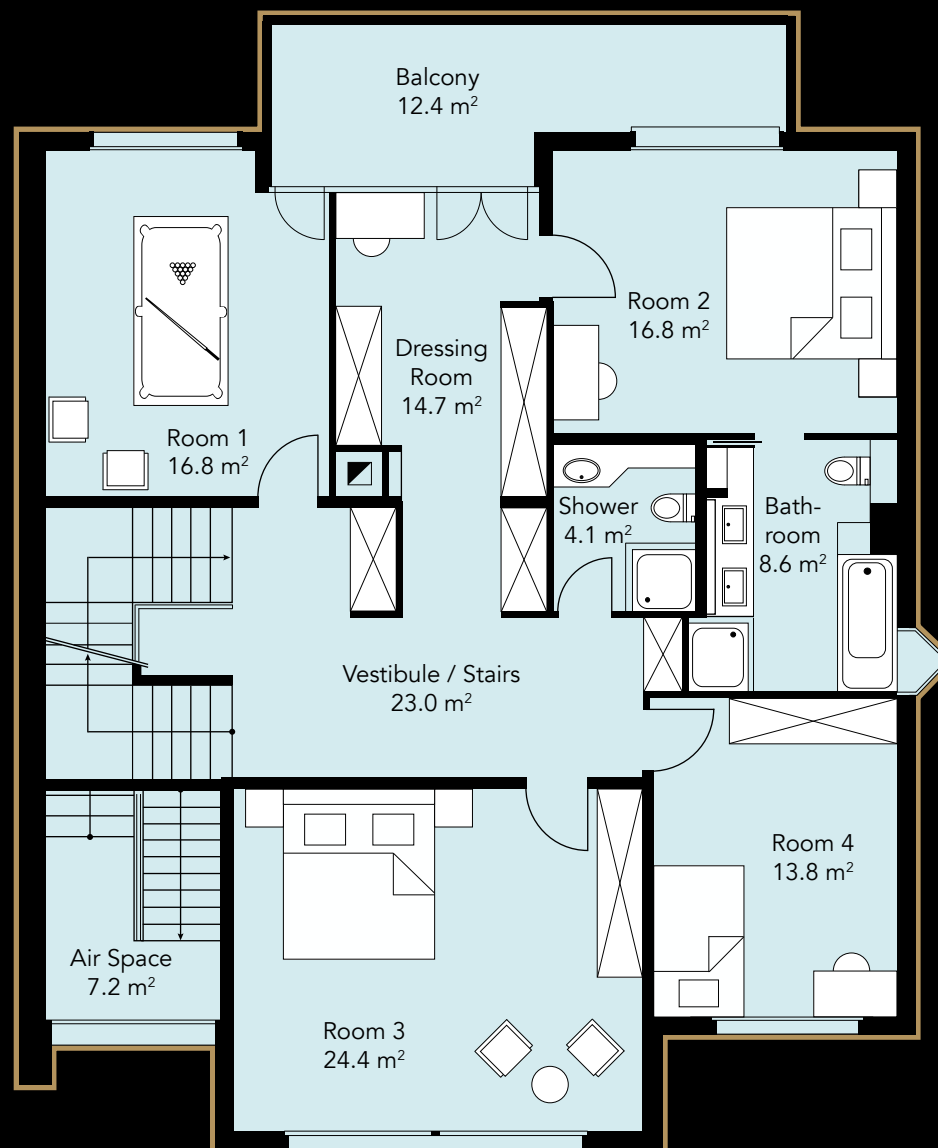




## SEMIBASEMENT



## UPPER FLOOR





# ATTIC





## LEGAL NOTICE

Konzept, Design  
Linder Immobilien Promotion GmbH  
Schopfgässchen 8  
4125 Riehen

Telefon 061 643 13 33  
[info@linderimmo.ch](mailto:info@linderimmo.ch)  
[www.linderimmo.ch](http://www.linderimmo.ch)

All information (plans, visualizations) without guarantee



Left to right: Fredi Linder, Matthias Linder, David Linder, Sebastian Schwarze





**LINDER**  
IMMOBILIEN

[www.linderimmo.ch](http://www.linderimmo.ch)